



# Weekly News

Friday  
8th December  
2023

Please visit our website : [www.haslett.org.uk](http://www.haslett.org.uk)

## Star of the Week for

### 'Supporting others in their learning'

**EDISON:** Arit  
**UPTON:** Kwan  
**RUTHERFORD:** Jacob  
**VOLTA:** Emma  
**CROWTHER:** Rhys  
**MAYBACH:** Maya  
**MURREY:** Ava  
**JOULES:** Georgia  
**MAYER:** Bella  
**WINSTANLEY:** Davy  
**HAUKSBEE:** Omna  
**PARSONS:** Chloe



## BEST CLASS ATTENDANCE WEEK ENDING 1.12.23 :

Joules with 100%

### November Attendance

Caroline Haslett 97.16%  
Milton Keynes Attendance 94.7%  
National Attendance 93.6%

## TT Rockstars



Well done to Crowther class !



## Numbots

Well done to Rutherford class!

## HOUSEWINNERS FOR WEEK ENDING 1.12.23

Berners-Lee

School finishes for the Christmas  
break on  
Friday 22nd December at 1pm

Dear parents,  
We recently launched the 16 days of Christmas challenge. This is where all children who attend school every day in December, and on time, will be entered into a prize draw to win a £20 Amazon voucher. This promises to be an action/activity packed month with memories to be made, and exciting learning to be had. Here's looking forward to bringing the year to a fabulous close.

## Dates for your diary

### Year Two Production

Tuesday 12th December at 6pm

Wednesday 13th December at 6pm

### Foundation Stage Nativity

Monday 18th December at 2pm Pelton class

Tuesday 19th December at 2pm Aston class

## Signs of the week

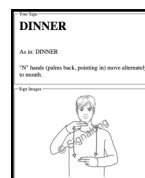
The Signs of the Week are back!

We've recorded a recap video for the ones we covered before: <https://youtu.be/BEJO2y-1xvU>

The signs for this week are:

- Dinner
- Biscuit
- Cup
- Toast

Here is Matthew showing you how it is done:  
[https://youtu.be/4I\\_I5Qww\\_O8](https://youtu.be/4I_I5Qww_O8)



## Learning Behaviours

At Caroline Haslett Primary School, we have 8 characters that help us remember the skills of an effective learner in all of our lessons.

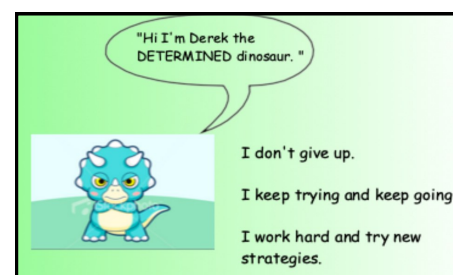
The character for next week will be Derek the Determined Dinosaur.

Encourage your child to practise the skills listed below and be like Derek.

I don't give up.

I keep trying and keep going.

I work hard and try new strategies.



School email address is — [schooloffice@carolinehaslett.milton-keynes.sch.uk](mailto:schooloffice@carolinehaslett.milton-keynes.sch.uk)

## Year One Christmas Performances

The children have performed twice this week and have all remembered their lines, the songs and the dances! The teachers are all very proud of each one of the children!



## Bocca/Curling Event

We took a great group of children down to an event hosted by the Milton Keynes College Young Leaders.

They took part in Bocca (a sport similar to bowls) and curling (no ice though). They had a great time and we have a little statement from Jaden.

"At the event, I enjoyed the game which you would throw the red/blue balls to the white target ball. I also enjoyed the game in which you would push a circle shape with a handle and wheels on the bottom to aim to a target 1=1 point etc. If you pushed too hard it wouldn't hit a target (same for if you pushed too weakly). I also enjoyed the warmup games like line tag (you could only run on the lines).

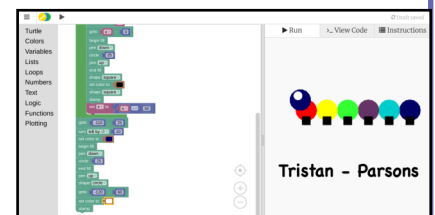
## National Space Centre Visit

Year 5 had a wonderful time at the National Space Centre last Friday. The children thoroughly enjoyed exploring the galleries and learning many interesting facts. The highlight of our day was definitely the Planetarium show, which took us on a journey through our solar system, the galaxy and beyond!



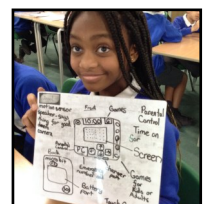
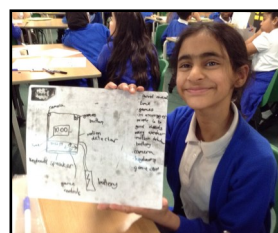
## Year 6 Coding

Year 6 have been busy experimenting with Python block coding. They used a program using colour and co-ordinate variables and loops to draw a caterpillar.



## STEM

On Wednesday, Year 6 were visited by a STEM ambassador. The children participated in hands-on activities and workshops led by experienced STEM professional Alan O'Donohoe. Alan is a specialist in education who was shortlisted for NAACE ICT Impact award in 2013. In 2014 he won a TalkTalk Digital Hero Award, and in 2015 was named as a BBC 'Make It Digital One To Watch' digital influencer. The children explored the potential for STEM to solve problems and gained insights into possibilities that STEM careers and further studies can offer them. Congratulations to Rehet who won a Raspberry Pi.





# Junior Park Rangers

## Junior Park Rangers winter competition

Create a piece of art that shows the wildlife that can be found in the parks in Milton Keynes during the winter.

You can be as creative as you like. You may wish to choose collage, pastels, paints, pencil sketching, charcoal, sculpture, food art, or you may choose to create a piece in the style of a famous artist.

There will be prizes for the winners in three categories:

- Early Years Foundation Stage
- Key Stage 1 [Years 1 & 2]
- Key Stage 2 [Years 3, 4, 5, & 6]

All entries to be handed into the front reception at school by Monday January 15<sup>th</sup> 2024. Make sure you write your **name** and **class** on the back.



We look forward to seeing all your wonderful creations!

Caroline Haslett Junior Park Rangers



## Year 4 Art

In Art this term, we have studied the works of Alberto Giacometti and created clay and wire maquettes to form part of a group installation.



## Online Safety Byte

This week's Caroline Haslett Online Safety Hero is Mr. Optetech.

Mr. Optetech reminds us to evaluate digital content. He has a magnifying glass to spot fake news and binoculars to detect whether websites are real. His padlock helps us to remember to always use secure sites. His sieve filters appropriate content and ensures that only genuine emails are opened.

Mr. Optetech was designed by children from the Hawking house.



## CYCLING SANTAS



**Saturday 16<sup>th</sup> December 10.30-11.45am**  
**Station Square, MK9 1LA**

including

### SCHOOLS COMPETITION

Which school can turn out most students, staff and parents?  
Prizes for schools and owners of best blinged bikes!



All welcome to join this guided ride around city centre with safety stewards (children with parents).  
Accessible to all cycles and abilities.  
Car parking nearby.

Scan QR code now to book your free santa costume and/or bike.



Organised by  
alliance to increase cycling in Milton Keynes



## Keeping young people safe near the railway

'The tragic death of Harrison in 2017, when he was in Year 7 at Guilsborough Academy, brought home to our community the importance of teaching our children about safety on the railways. Schools play a vital role in keeping our children safe.' - Simon Frazer, Principal at Guilsborough Academy.

Please find below a link for a 15 minute safety video link for you to watch at home. Over 20 million students, parents and teachers from across the UK have already watched these videos which has led to a significant decrease in the number of fatalities and injuries in their area through watching the safety videos.

Suitable for KS1 <https://learnliveuk.com/ks1-primary-school-safety-talk/>

Suitable for KS2 <https://learnliveuk.com/network-rail-primary-school-safety-talk>



## Christmas Card Post Box

The post box will be in the school office for children to drop their Christmas cards into. These will then be delivered around the school by the year 6 children.





## Christmas Music Event

Last week, we had the annual Christmas event with some fun music and beautiful singing from the children. When we have totted up the final sales amounts from the food and treats, we will let you know how much we all raised. Hold on to your raffle tickets: this will be drawn in school next week, and the winning numbers published in the next newsletter!



## Secret Gifts

Next week, the children will be helped by our lovely team of members and volunteers with wrapping and labelling their secret gifts to bring home. It's the most wonderful time of the year!

The Friends have purchased the following items for Year one:

- Percussion class pack
- Wrist bells class pack
- half moon tambourines
- 2 sets x indian brass bells
- 5 pairs x claves
- 2 x cabasa medium cabasa
- 2 x large wooden kokiriko
- Shared Class camera

