

Knowledge

David Hockney 1937

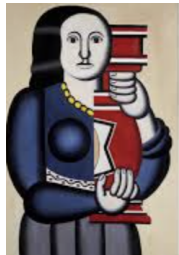
He is a British painter, draughtsman, printmaker, stage designer and photographer. He is considered one of the most influential British artists of the 20th century.

Man Ray 1890-1976

He was a famous American fashion and portrait photographer. He produced work that was **surreal**.

Fernand Leger 1881-1955

He was a French painter who often used bold, black outlines in his work to make his subjects look strong and important. He was often called a **cubist** because of the type of paintings he did.



Woman
Holding a Vase
Leger



A Bigger Splash
David Hockney



Glass Tears
1937
Man Ray

Vocabulary

Cubism

In Cubist artwork, the artist breaks an object into different shapes. The paintings are not realistic.

Surrealism - a form of art that contains some weird, nonsensical parts that makes it not quite real.

Smudging & erasing - Charcoal particles can be smudged with a finger to blend and create shading or erased to create highlights or lighter spots.



This work is called
Indestructible.
It is by Man Ray
and is an example
of Surrealism.

Activities

Learn about the work of the artist David Hockney and the photographer and draw self-portraits in pencil and charcoal.

Produce a sketch of an Ancient Egyptian death mask taking inspiration from the work of Man Ray

Design and sculpt an Ancient Egyptian death mask from clay and decorate it using the bold style of the artist Fernand Leger.

Skills

Learn about the work of great artists and designers in history

Improve mastery in art and design techniques [pencil, charcoal, clay sculpture, painting, papier maché modelling]

Evaluate their own and others' work

Year 3	
Exploring & developing ideas	Use sketchbooks to record ideas Explore ideas from first-hand observations Question and make observations about starting points, and respond positively to suggestions Adapt and refine ideas Comment on artwork using visual language
Drawing	Experiment with showing line, tone and texture To begin to use shading to show light and shadow effects Use different materials (pencil & charcoal) to draw Show an awareness of space when drawing
Painting	Use varied brush techniques to create shapes, textures, patterns and lines Use brushes for specific purposes Mix colours effectively using the correct language e.g. tint, shade, primary, secondary
Sculpture	Cut, make and combine shapes to make recognisable forms Use clay and practise joining techniques To create clay models using modelling techniques to create form, line and texture based on observational drawings
Work of other artists	Use inspiration from famous artists to replicate a piece of work Reflect upon work inspired by a famous artist and the development of the art skills Express an opinion about the work of a famous artist and refer to techniques and effect Create original pieces that are inspired by the study of others.