

Caroline Haslett Primary School - Geography

Topic: Summer

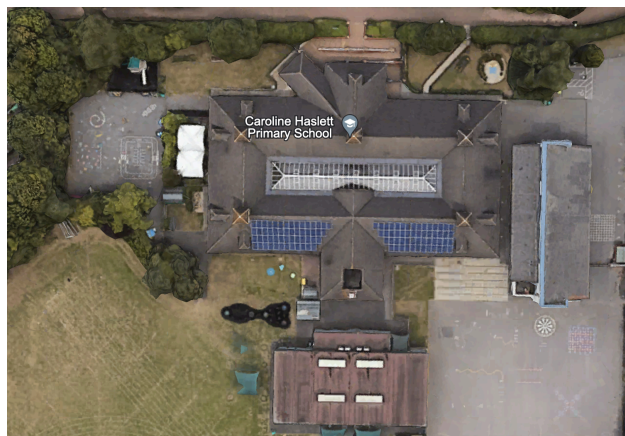
Year 1

Human and Physical Geography

Knowledge

Physical features are natural features of the land.

Human features are features that have been man-made.



Activities

Sort pictures of physical and human features.

Identify the human and physical features of the school grounds.

Skills

Use aerial photographs to recognise landmarks and basic physical and human features.

Use geographical vocabulary to refer to these features.

Use simple fieldwork and observational skills to study the geography of their school and its grounds and the key human and physical features of its surrounding environment.

Vocabulary

Physical Features

Beach - an area of sand or pebbles that leads to the sea.

Cliff - a steep rock face, often along the edge of the sea.

Coast - the place where the land meets the sea.

Forest - a large, wooded area with a thick growth of trees and plants.

Hill - a naturally raised area of land, which is not as high as a mountain.

Mountain - a very large, high and steep hill.

Ocean - a large body of salt water, which covers the majority of the earth's surface.

River - a large stream of fresh water that flows into the sea or a lake.

Sea - a large area of salty water that is part of an ocean.

Season - one of 4 divisions of the year (spring, autumn, summer and winter) often marked by different weather patterns.

Soil - the top layer of the earth's surface in which plants grow.

Valley - a long stretch of low land between hills

Vegetation - plant life.

Weather - the day-to-day outdoor conditions such as temperature and rainfall.

Human Features

City - a large town.

Factory - a large building where goods are made in large quantities.

Farm: an area of land used to produce crops or to breed animals and livestock.

Harbour - a place on a coastline where ships and boats can be kept.

House - a building designed for people to live in.

Office: - a building of rooms where business and work is carried out by office workers.

Port - a town or city with a harbour where ships can load and unload people or goods.

Shop - a building in which goods are sold.

Town - a large group of houses, shops and factories where people live. Towns are larger than villages but smaller than cities.

Village - a small group of houses, perhaps with a few shops, that are often in the countryside.

Location Knowledge	-
Place knowledge	-
Human and physical	<p>Use basic geographical vocabulary to refer to key:</p> <ul style="list-style-type: none"> • physical features - beach, cliff, coast, forest, hill, mountain, sea, ocean, river, soil, valley, vegetation, season and weather. • human features - city, town, village, factory, farm, house, office, port, harbour and shop.
Geographical skills and fieldwork	Use aerial photographs to recognise landmarks and basic human and physical features.