



CAROLINE HASLETT KNOWLEDGE ORGANISER COMPUTING YEAR 6 SPRING 1 MICROBITS

SKILLS

- Understand that computers use physical inputs and outputs and give examples.
- Program physical inputs, outputs and random variables.
- Label parts of a Microbit.
- Design, write and debug programs that accomplish specific goals, including controlling or simulating physical systems.



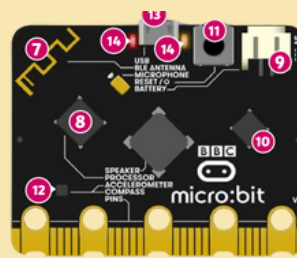
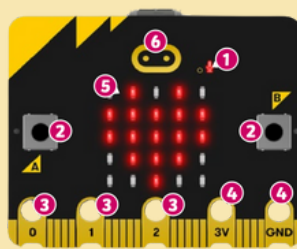
KEY FACTS

The BBC micro:bit is a pocket-sized computer. It has an LED light display, buttons, microphone, sensors and many input/output features. These features can be programmed and can let you physically interact with the world around you. There are many possibilities with the BBC micro:bit!

If you're using a desktop or laptop computer to connect to the micro:bit, you will need a micro USB data cable. If you're using a mobile device to connect to the micro:bit, you will need to connect them wirelessly through Bluetooth.

VOCABULARY

accelerometer	A sensor that detects movement.
algorithm	A set of step-by-step instructions.
Bluetooth	A way that devices can be connected to each other. Typically, a Bluetooth connection will be wireless.
flashing	The process of transferring a program to a micro:bit. It is called flashing because the program is copied to the micro:bit's flash memory.
LED	This stands for light-emitting diode . The micro:bit display is made of 25 LEDs .
microphone	A piece of hardware that can be used to input audio.
processor	Sometimes called the "brains" of a computer. The processor receives the inputs, runs the programs and gives outputs.
program	A set of instructions written in code that performs a given task.
touch sensor	A device capable of detecting when it is touched.
USB data cable	Allows the transfer of data between a computer and peripheral devices. USB is short for universal serial bus .



1. Microphone
2. A and B buttons
3. GPIO pins
4. 3V and GND pins
5. LED display and light sensor
6. Touch sensor

7. Radio and Bluetooth antenna
8. Processor
9. Battery socket
10. USB interface chip
11. Reset Button
12. Compass and Accelerometer
13. Micro USB socket
14. Single LEDs

